

LANDCARE GROUP DETAILS

The Flaggy Creek & District Landcare Group formed in 1996 and the group area covers 11,488 hectares. The Eastern boundary is approximately 12km North West of Bairnsdale, defined by Boggy Creek. The Western boundary is defined by the Mitchell River where it enters the Mitchell River Valley.

The Group mainly focuses on weed control, encouraging sustainable farming practises and environmental restoration including revegetating cleared areas.

The Flaggy Creek & District Landcare Group is one of 23 Landcare Groups operating under the banner of the East Gippsland Landcare Network.

This performance story has been compiled by the East Gippsland Landcare Network. The information contained within this brochure is a summary of the details from the Flaggy Creek & District Landcare Group's Annual Report for the 2011- 2012 financial year.

For more information, please contact:

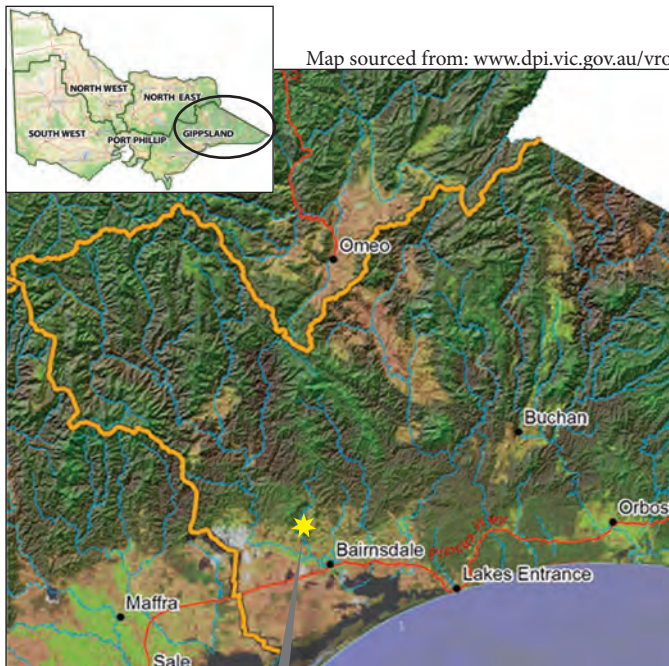
East Gippsland Landcare Network Inc.

PO Box 1498
Bairnsdale, Vic, 3875
Ph: (03) 5152 0600
Fax: (03) 5152 6865

Web: <http://egln.org.au/blog/portfolio/flaggy-creek/>



WHERE TO FIND US?



FLAGGY CREEK & DISTRICT LANDCARE GROUP PERFORMANCE STORY

1st July 2011 - 30th June 2012



FLAGGY CREEK & DISTRICT LANDCARE GROUP PERFORMANCE STORY 2011-12

LANDCARE ACTIVITIES

The Flagg Creek & District Landcare Group currently has a membership base of 38 families.

The Group updated their Action Plan in August 2011.

Six Landcare meetings and seven activities were held during the 2011-12 financial year. Activities included working bees and litter removal as part of Clean Up Australia Day, a Farm Walk and Talk at the Rae Property, a Weed ID workshop and a Seed Propagation Workshop. Working bees included weed control, including African Lovegrass control along roadsides, and revegetation activities at project sites.

Individual members were involved on the East Gippsland Landcare Network's General Committee.

Five wonderful partnerships were maintained with Landmark, the East Gippsland Specialist School, the Lindenow Progress Association, FlyCo and the Red Gum Plains and Coastal Hinterland Weeds Committee (*The Lovegroup - named due to their focus on African Lovegrass*). New partnerships were forged with the Work For The Dole program, East Gippsland Shire and the Clean Up Australia Day Committee.

The Group celebrated their successes and achievements by holding a Christmas Party for their members at the Flagg Creek Community Hall.



LANDCARE OUTCOMES

The Group secured funding of \$1,386.00 for the Environmental Restoration Project through the State Government's Victorian Landcare Grants Program and \$2,710.00 from the 25th Anniversary of Landcare Grants.

Flaggy Creek & District Landcare Group's bank balance was \$7,637.28 at the end of the 2011-12 financial year.

In-kind support from members and other participants during the year totalled \$8,632.50 in labour, administration and group support.

Ten notices for meetings and activities were distributed to all members and the Group also circulated 4 editions of their Newsletter to 160 addresses.

The Flagg Creek & District Landcare Group also held 1 tour for 8 members and erected 2 community displays reaching more than 320 people.

